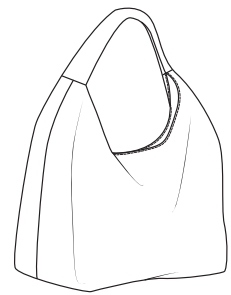


DIY2409 Shoulder bag #JaneShoulderBag

Seam allowance is included on all patterns:
All seams 1 cm



You need to cut the following parts

Fabric

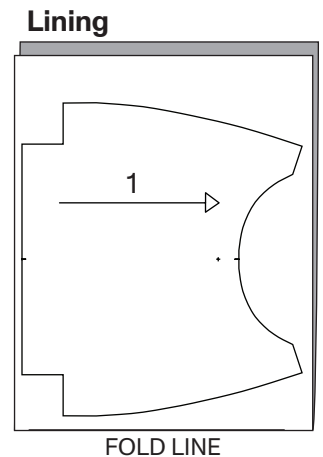
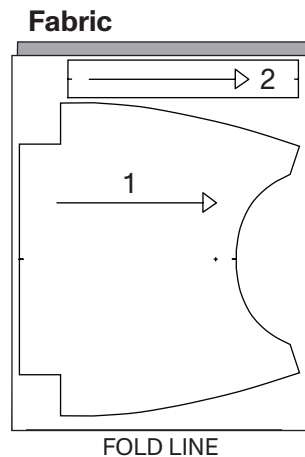
Part 1 Side x 2
Part 2 Handle x 1

Lining

Part 1 Side x 2

Vlieseline style-vil no.9530

Part 3 Bottom x 1 cut 15 x 40 cm



You need the following fabric and accessories

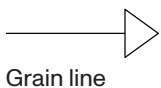
Fabric: w/135 cm 55 cm
Lining: w/135 cm 55 cm
Style-vil: w/72 cm 15 cm

Accessories:

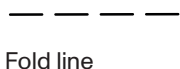
1 x Button magnetic 18 mm no. 40481



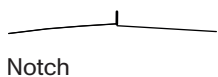
Symbols you may find on your patterns



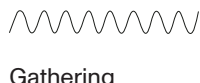
Grain line



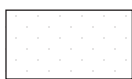
Fold line



Notch



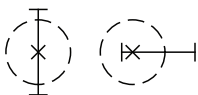
Gathering



Interlining



Cut line



Placement of button and buttonhole

10 CM

Self
made®

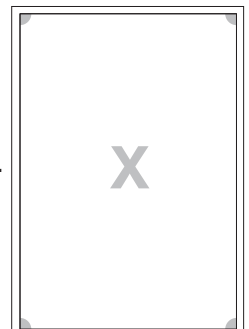


▲
Unsure how to print?
See this guide

CONTROL SQUARE:
Print this page, to check the square measurements:
If the measurements do not match, please adjust your printer settings.

10 CM

CONTROL PAGE FIT:
In print preview check page margin.
Margin have to be equal on all 4 sides of each page.



See



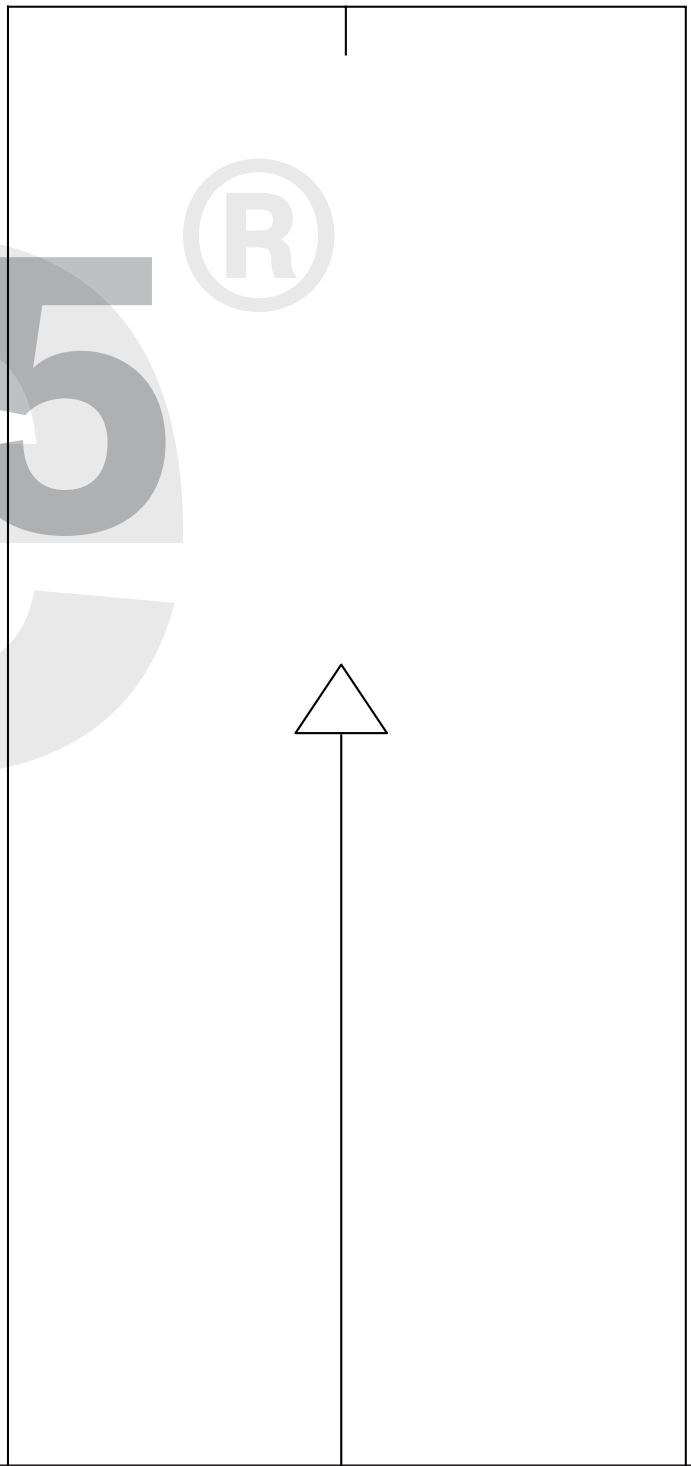
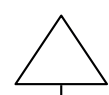
Download from Selfmade.com

Selfmade.com

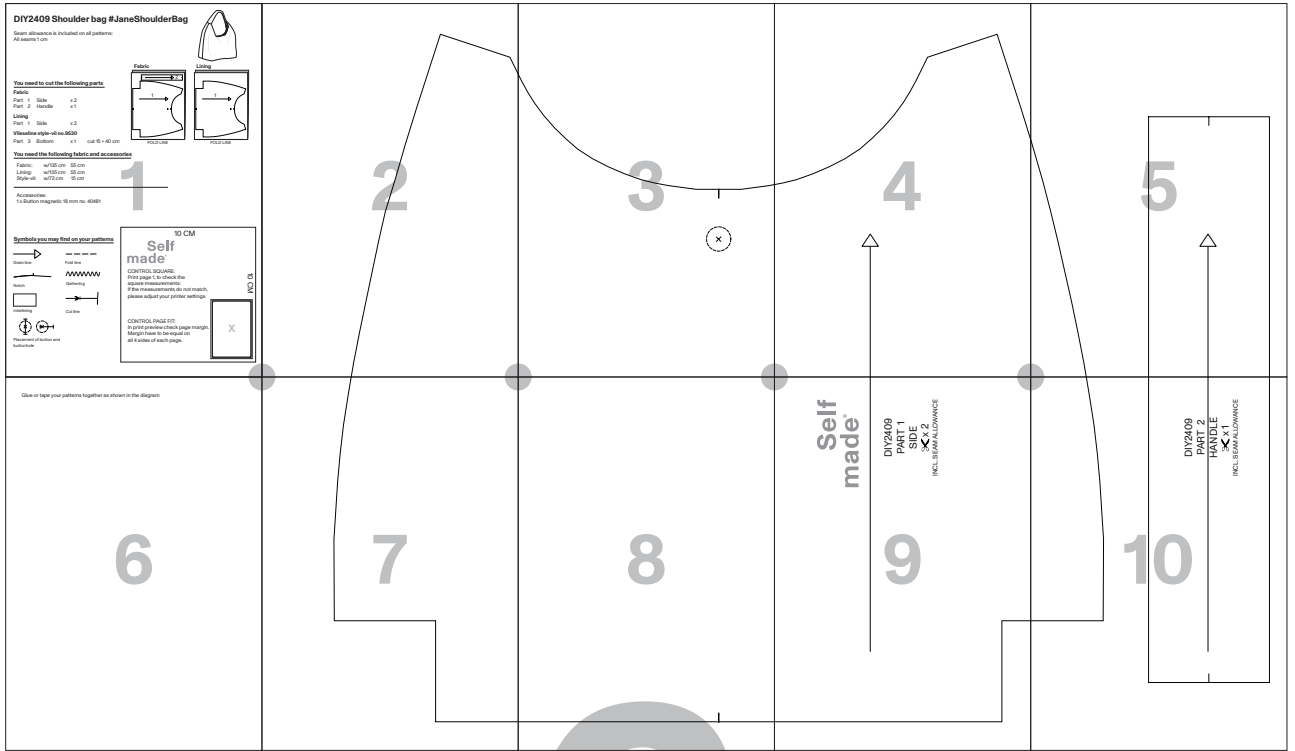


de

5



Glue or tape your patterns together as shown in the diagram



6

See

e

el f n
Free do
8

**Self
made[®]**

DIY2409

PART 1

SIDE



X 2

INCL. SEAM ALLOWANCE

Download from Selfmade.com

DIY

10



DIY2409
PART 2

HANDLE



x1
INCL. SEAM ALLOWANCE